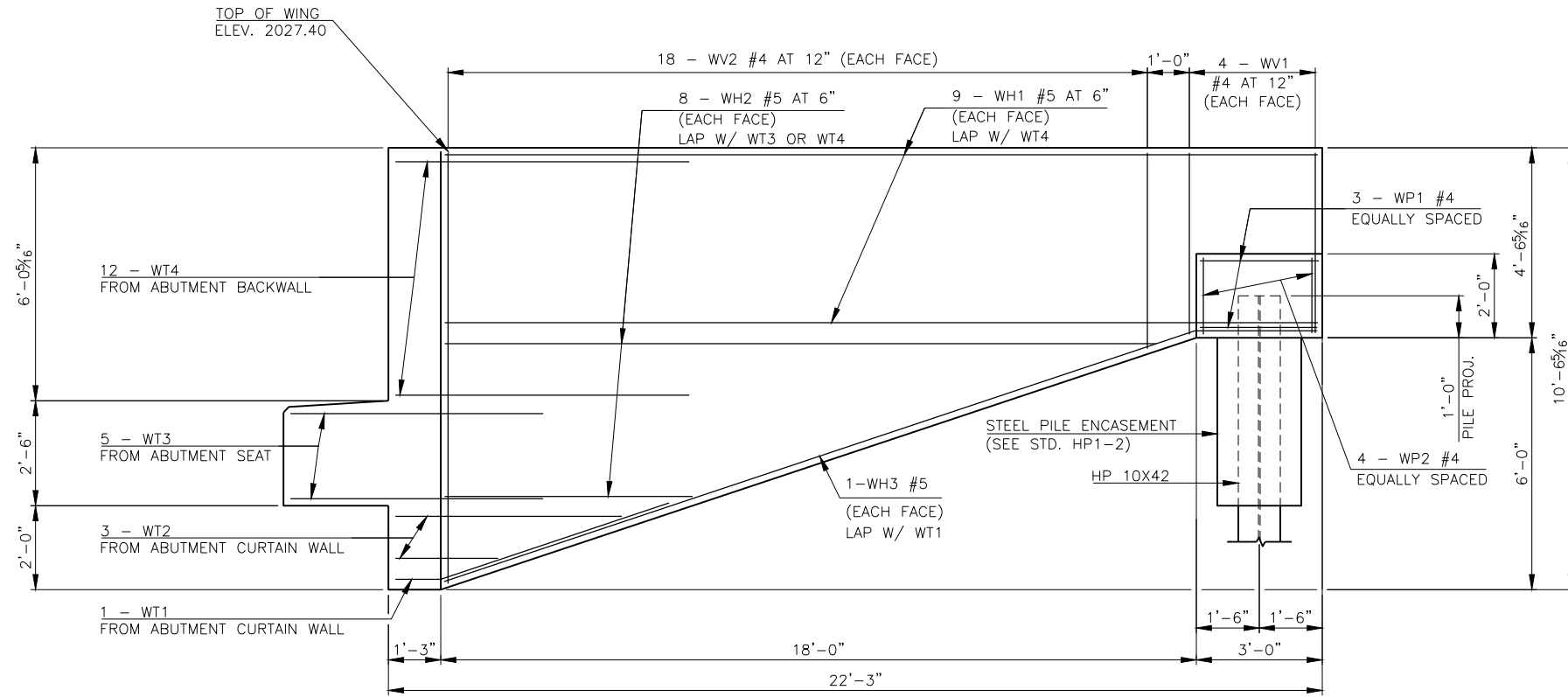
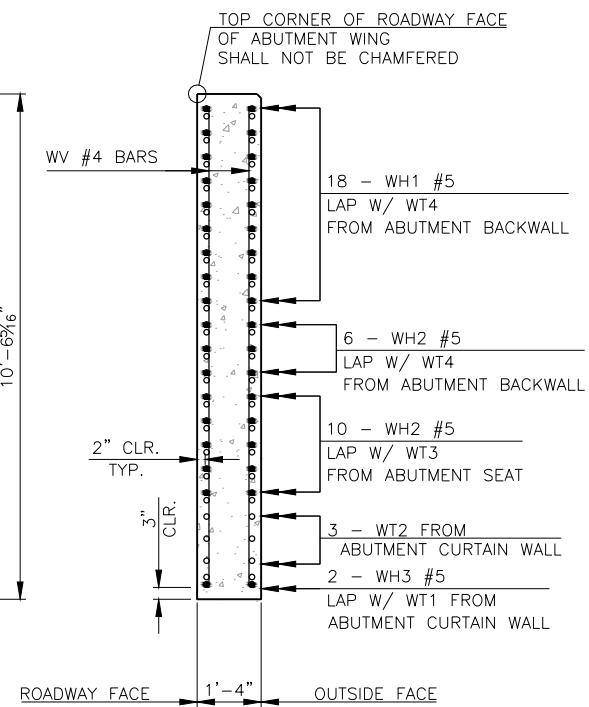


DESCRIPTION	REVISIONS	DATE



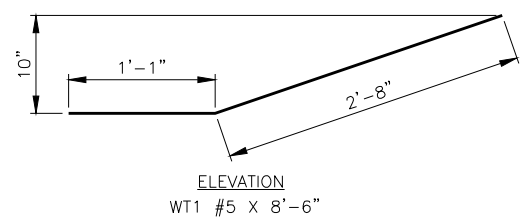
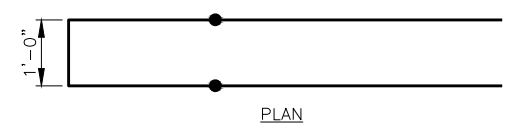
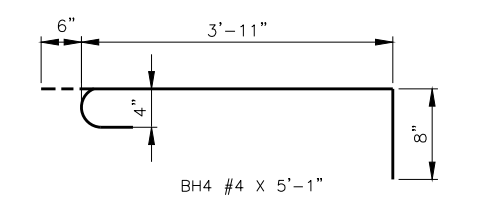
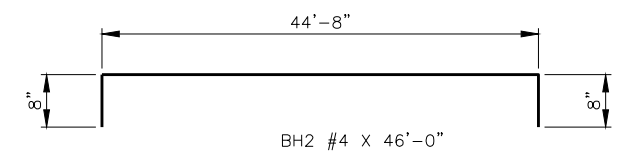
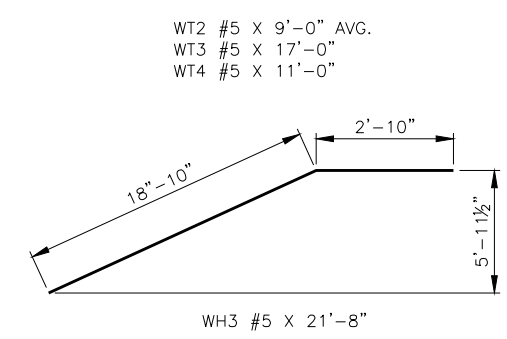
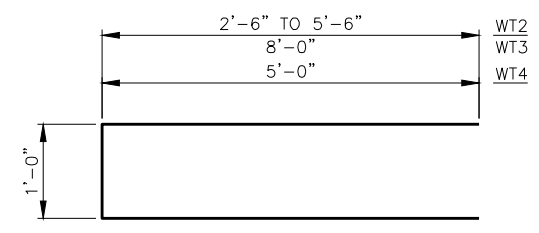
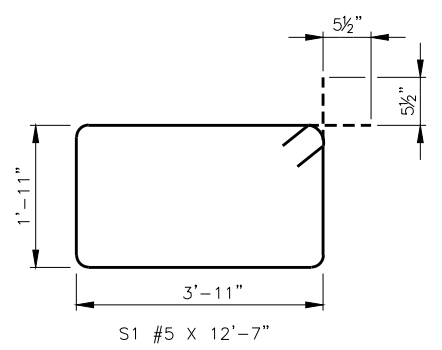
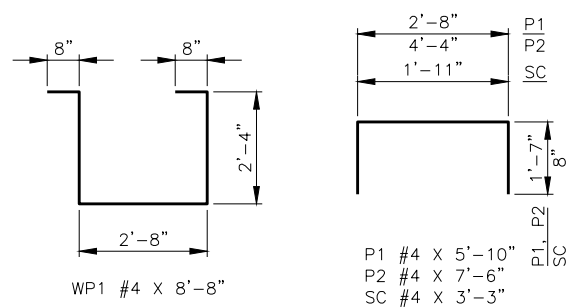
WING ELEVATION



SECTION THRU WING AT BACK FACE OF ABUTMENT SEAT

ABUTMENT BAR LIST				
ONE SHOWN - TWO REQUIRED				
EPOXY COATED REINFORCING				
MARK	SIZE	NO.	FORM	LENGTH
BH1	#4	10	STR.	44'-8"
BH2	#4	8	BNT.	46'-0"
BH3	#9	10	STR.	44'-8"
BH4	#4	27	BNT.	5'-1"
① BV1	#4	42	STR.	9'-2" AVG.
① BV2	#5	42	STR.	9'-2" AVG.
P1	#4	30	BNT.	5'-10"
P2	#4	20	BNT.	7'-6"
S1	#5	36	BNT.	12'-7"
SC	#4	4	BNT.	3'-3"
② WH1	#5	36	STR.	20'-8"
② WH2	#5	32	STR.	11'-4" AVG.
WH3	#5	4	BNT.	21'-8"
WP1	#4	6	BNT.	8'-8"
WP2	#4	8	STR.	1'-7"
WT1	#5	2	BNT.	8'-6"
③ WT2	#5	6	BNT.	9'-0" AVG.
WT3	#5	10	BNT.	17'-0"
WT4	#5	24	BNT.	11'-0"
WV1	#4	16	STR.	4'-1"
④ WV2	#4	72	STR.	7'-3" AVG.

- ① TWO SETS OF 21.
- ② FOUR SETS OF 8.
- ③ TWO SETS OF 3.
- ④ FOUR SETS OF 18.



THIS DRAWING IS PRELIMINARY IN NATURE. IT IS NOT A FINAL SIGNED AND SEALED DRAWING

DESIGN	J.W.H.	SH34 OVER N. PERSIMMON CREEK	WOODWARD COUNTY
DRAWN	Z.M.B.	BRIDGE A	
CHECKED	J.W.H.	ABUTMENT WING DETAILS	
APPROV.	T.A.C.		
SQUAD	CEC		
		JOB PIECE NO. 28827(04)	SHEET NO. 26